

# "LAS BRISAS" CONDOMINIUM PROJECT

*Hermosa Hills Residential Development & Biological Reserve*

## PROJECT ARCHITECTURAL DESCRIPTIONS SPECIFICATIONS, FINISHES AND APPLIANCES

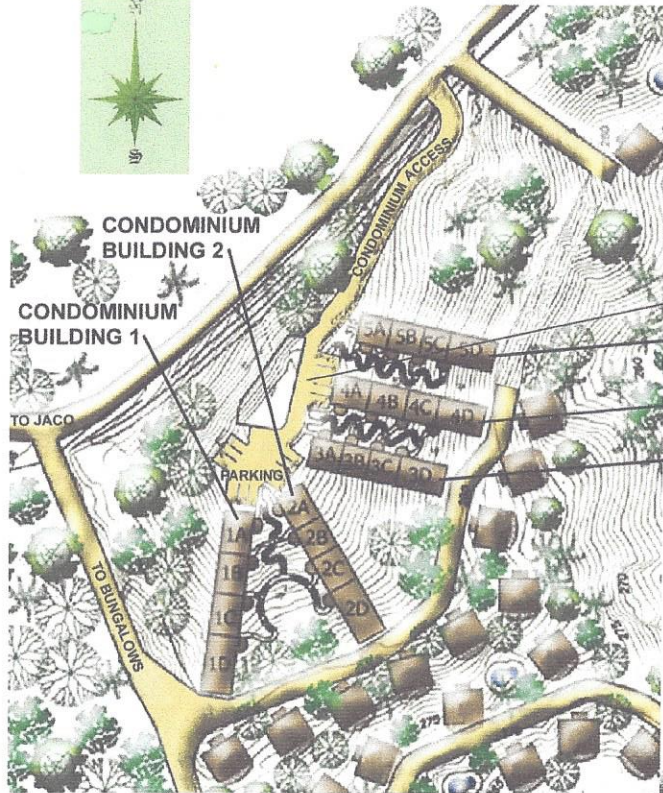
Update: November 12, 2007.

(Slides Content)

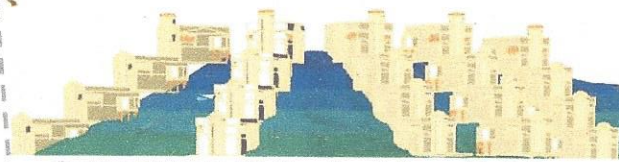
- "Las Brisas" Condominium Location in Hermosa Hills Project.....2/12
- Building Condominiums Distribution and Complex General Views.....3/12
- Condominium Floor Plans, Option "A".....4/12
- Condominium Floor Plans, Option "B".....5/12
  
- Condominium Building Schematic Longitudinal Section.....6/12
- Condominium Building Lateral Elevation.....7/12
- Condominium Building Frontal Elevation.....8/12
  
- Kitchen Appliances and Finishes.....9/12
- Bathrooms and Laundry Finishes / Condominium Level +/- 0.00 m.....10/12
- Master Bathroom Finishes / Condominium Building Level 0 + 3.00 m Option "A".....11/12
- Bathrooms Finishes / Condominium Building Level 0 + 3.00 m / Option "B".....12/12



"Las Brisas" Condominium Project



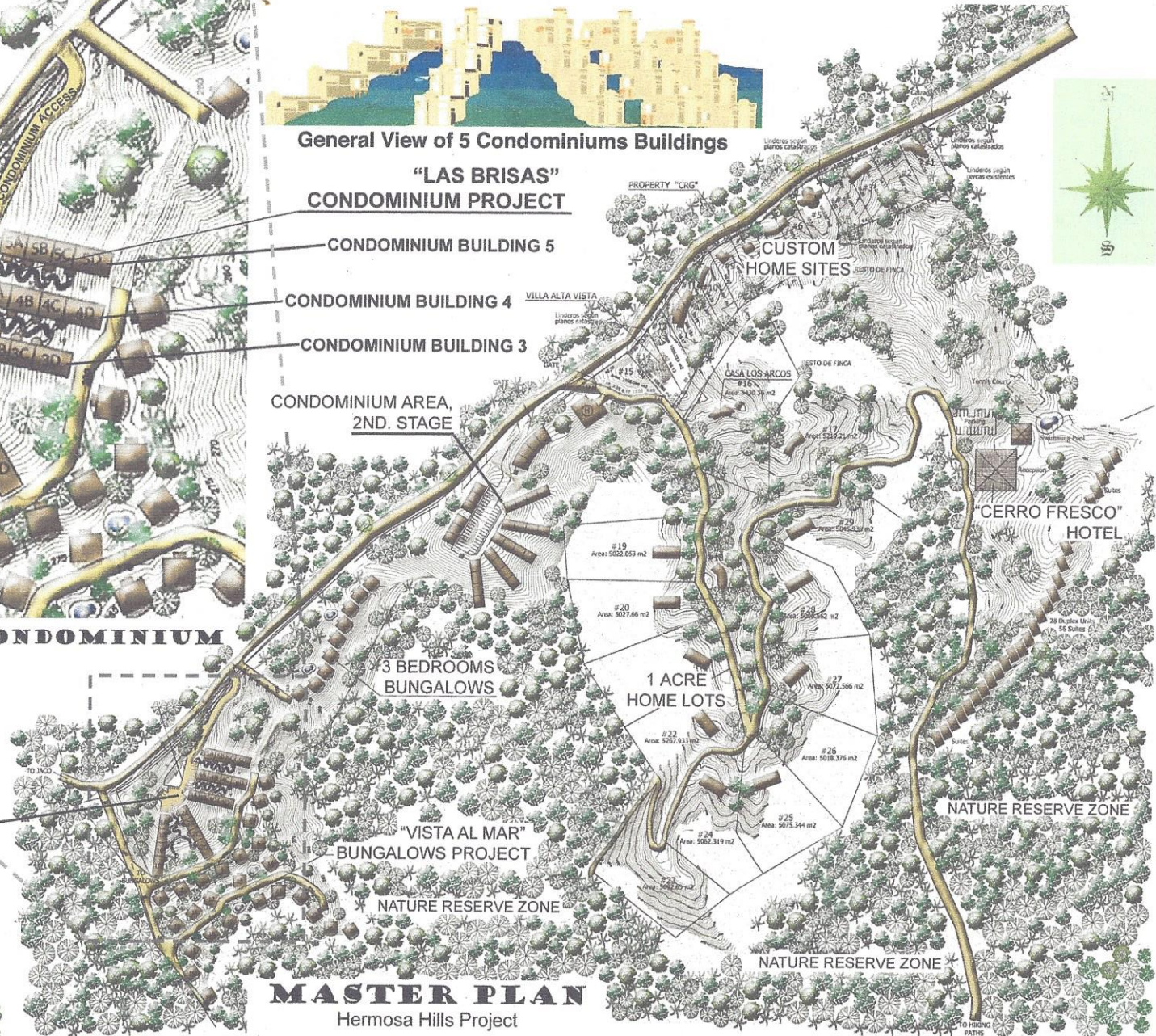
"LAS BRISAS" CONDOMINIUM PROJECT AREA



General View of 5 Condominiums Buildings

"LAS BRISAS" CONDOMINIUM PROJECT

- CONDOMINIUM BUILDING 5
- CONDOMINIUM BUILDING 4
- CONDOMINIUM BUILDING 3
- CONDOMINIUM AREA, 2ND. STAGE



MASTER PLAN

Hermosa Hills Project

"Las Brisas" Condominium Location in Hermosa Hills Project



Hermosa Hills  
Residential Development & Biological Reserve  
Asociación de Habitantes,  
25m de Oeste de Molinos Altos  
tel. 233 57 37  
fax. 239 53 71



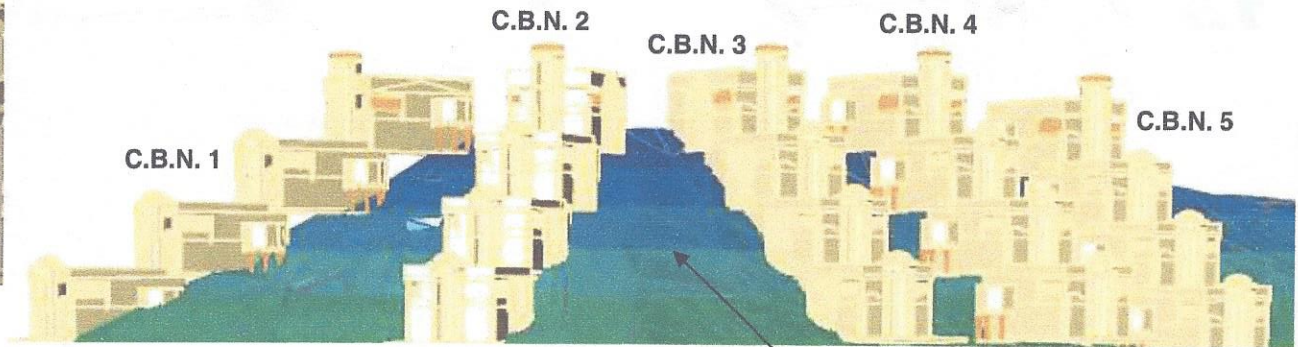
“Las Brisas” Condominium Project

**Notes:**

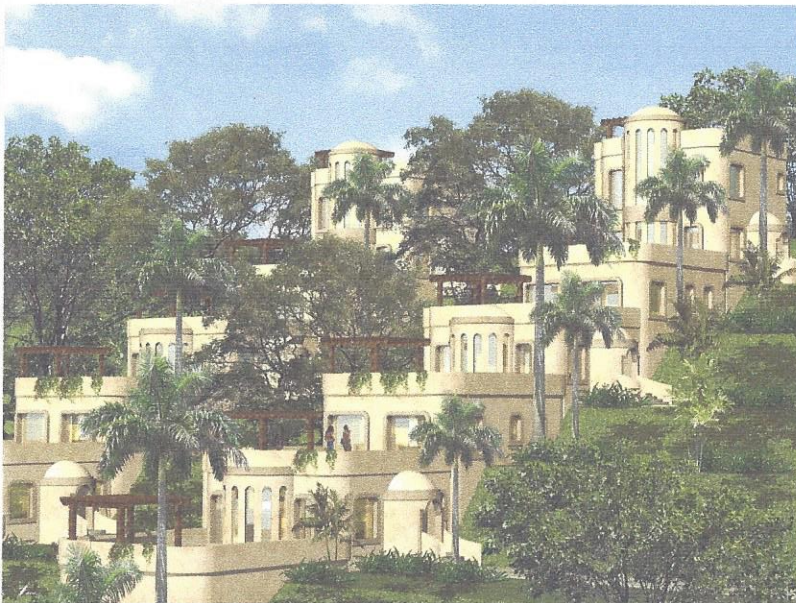
- Are 5 Condominium Buildings / • C.B.N. \_\_: Condominium Building Number \_\_.
- Each Building has 4 Individual Condominiums (A, B, C and D). / • There are 20 Individual Condominiums.



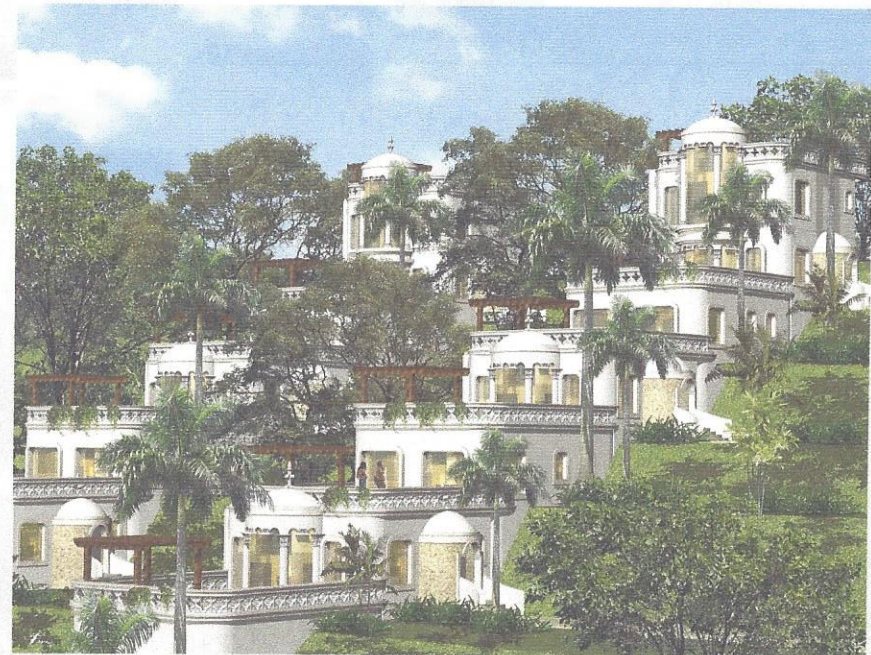
View of Pedestrian Access Area to Condominiums



Pedestrian Access Area to Condominiums



Building Finishes Options of Condominium Complex.



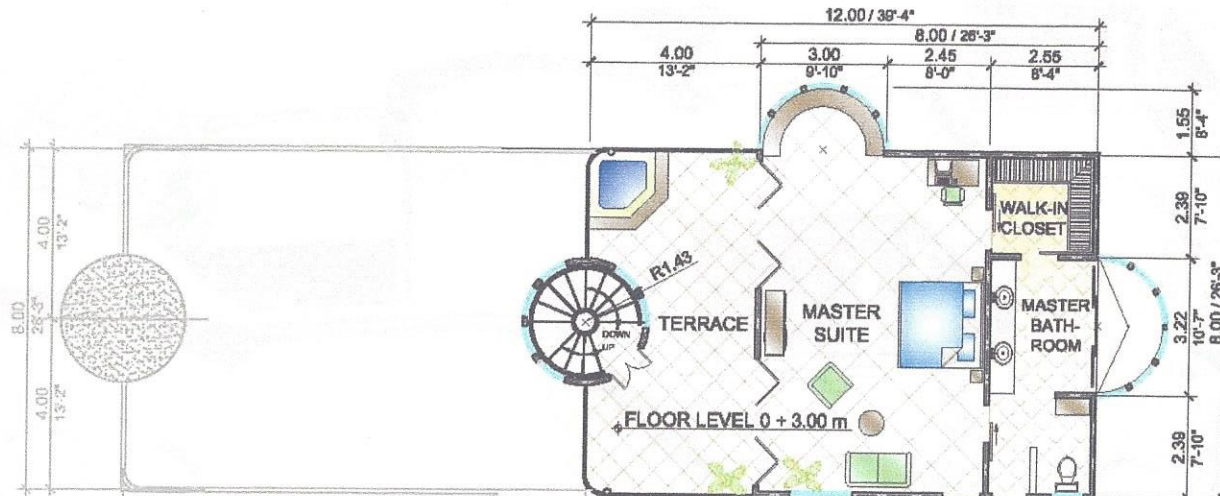
Building Condominiums Distribution and Complex General Views



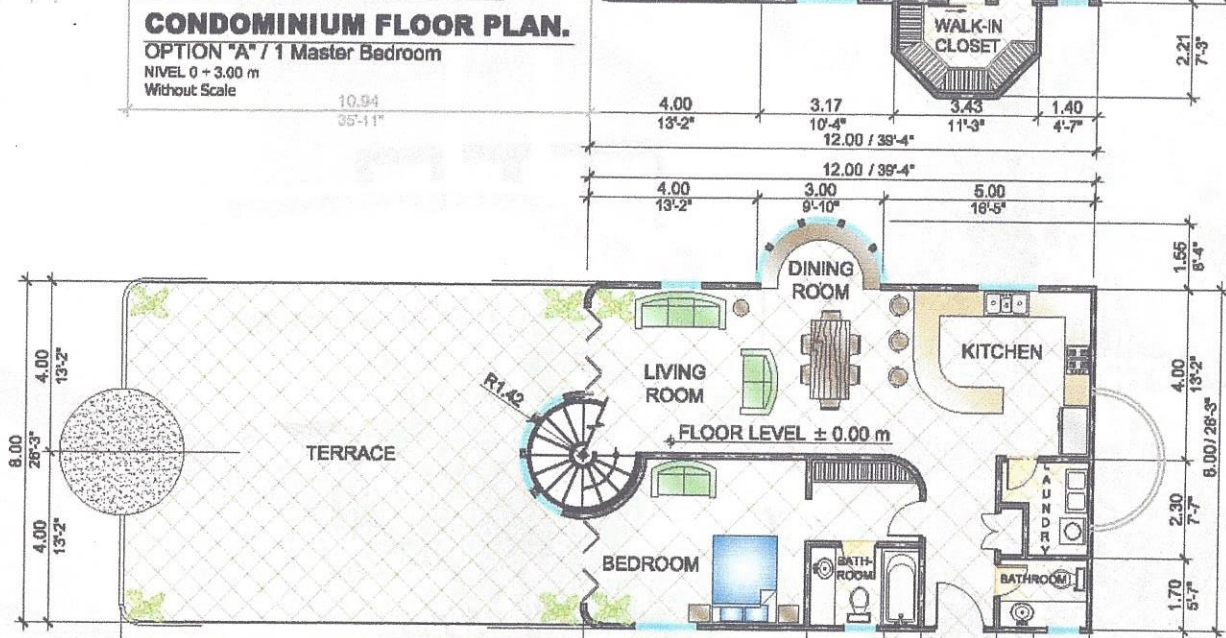
**Hermosa Hills**

Residential Development & Biological Reserve  
 Asunción de Belén,  
 251415 Oeste de Molinas Almosí  
 tel. 993 57 47  
 fax. 239 53 71



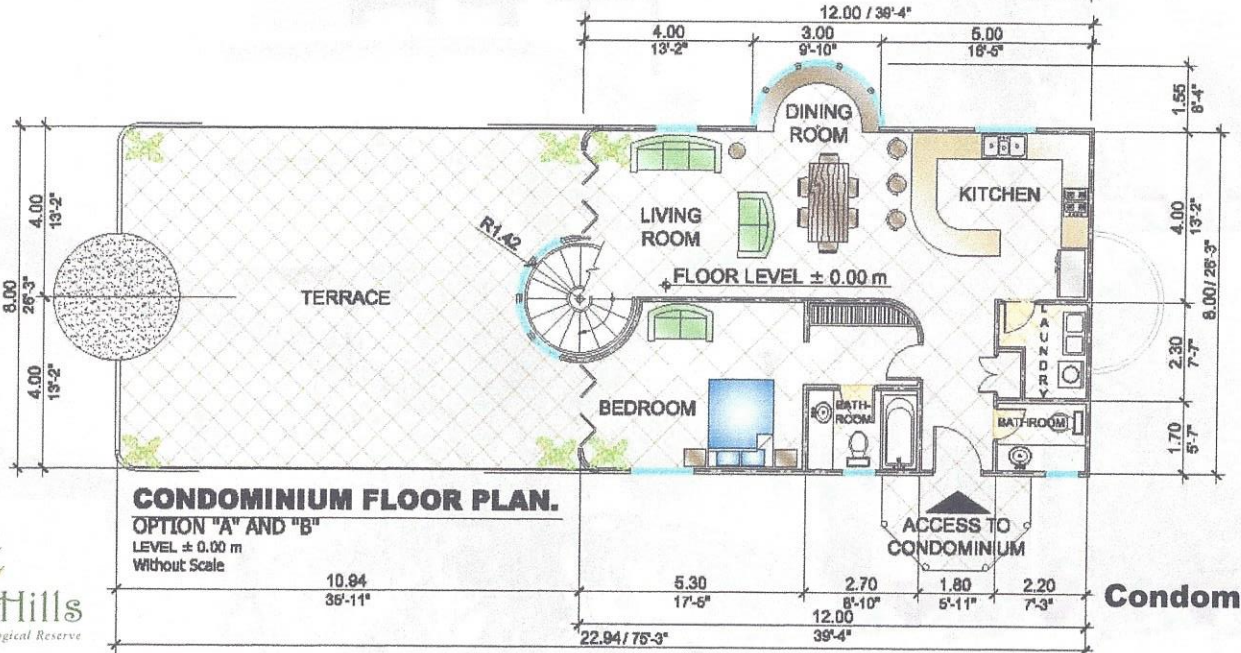
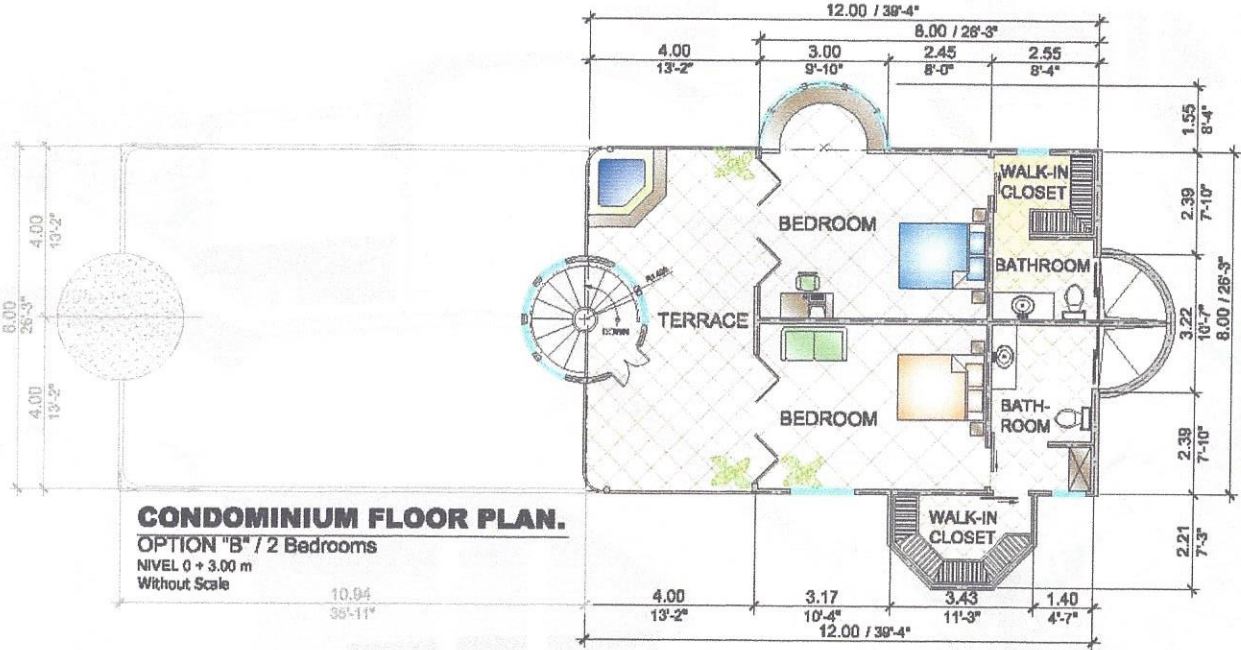


**CONDOMINIUM FLOOR PLAN.**  
**OPTION "A" / 1 Master Bedroom**  
 NIVEL 0 + 3.00 m  
 Without Scale



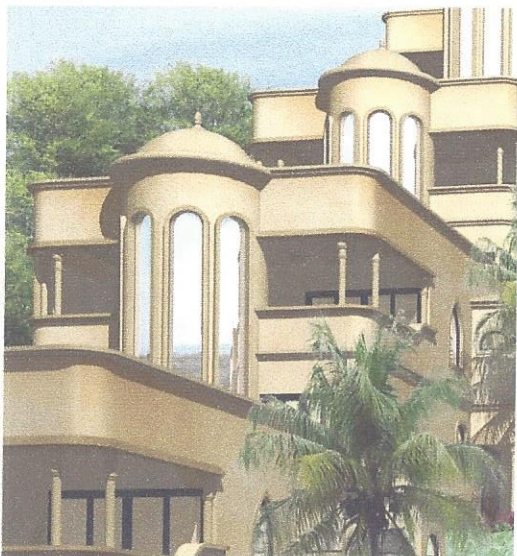
**CONDOMINIUM FLOOR PLAN.**  
**OPTION "A" AND "B"**  
 LEVEL ± 0.00 m  
 Without Scale

**Condominium Floor Plans**  
**Option "A"**

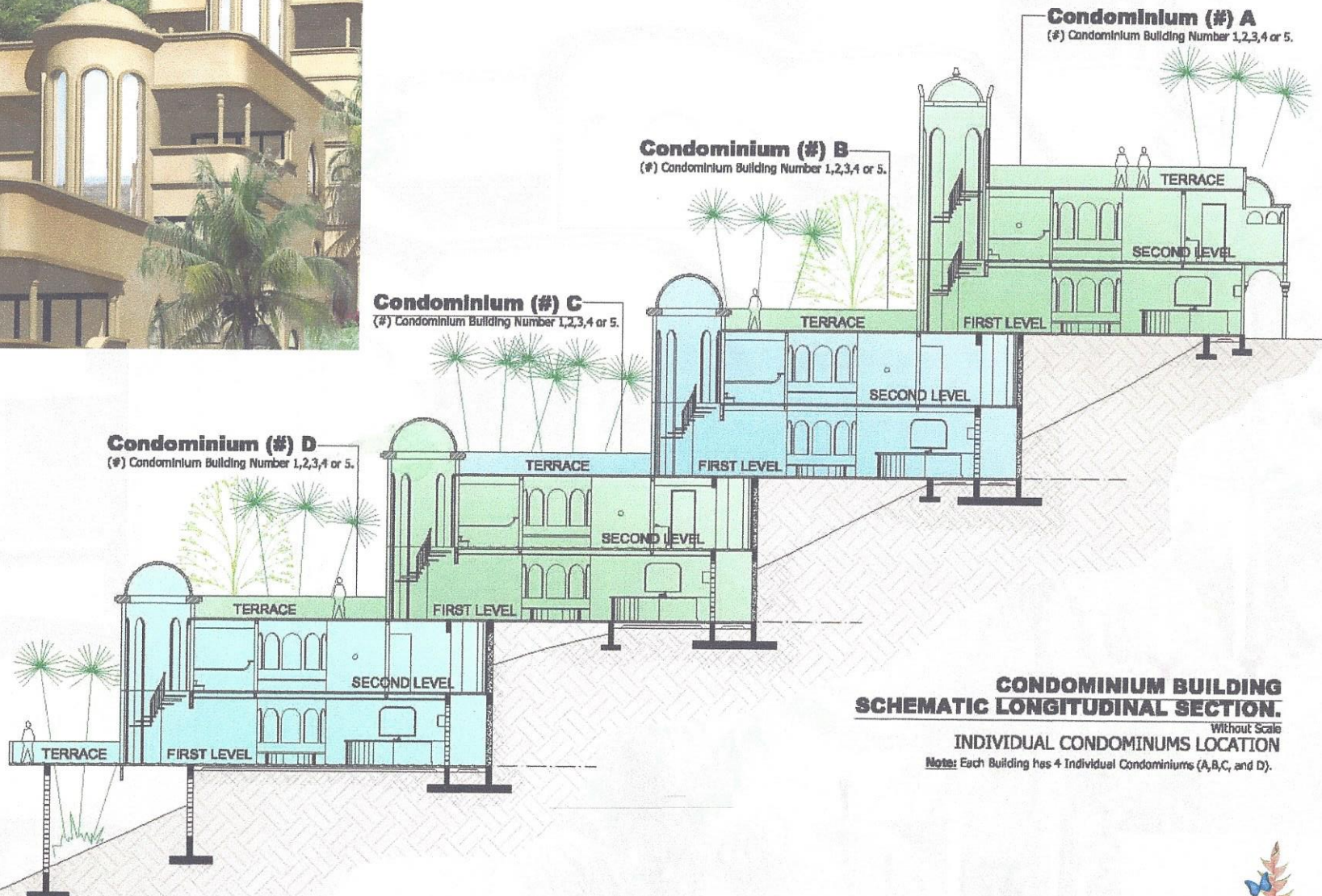


**Condominium Floor Plans**  
**Option "B"**



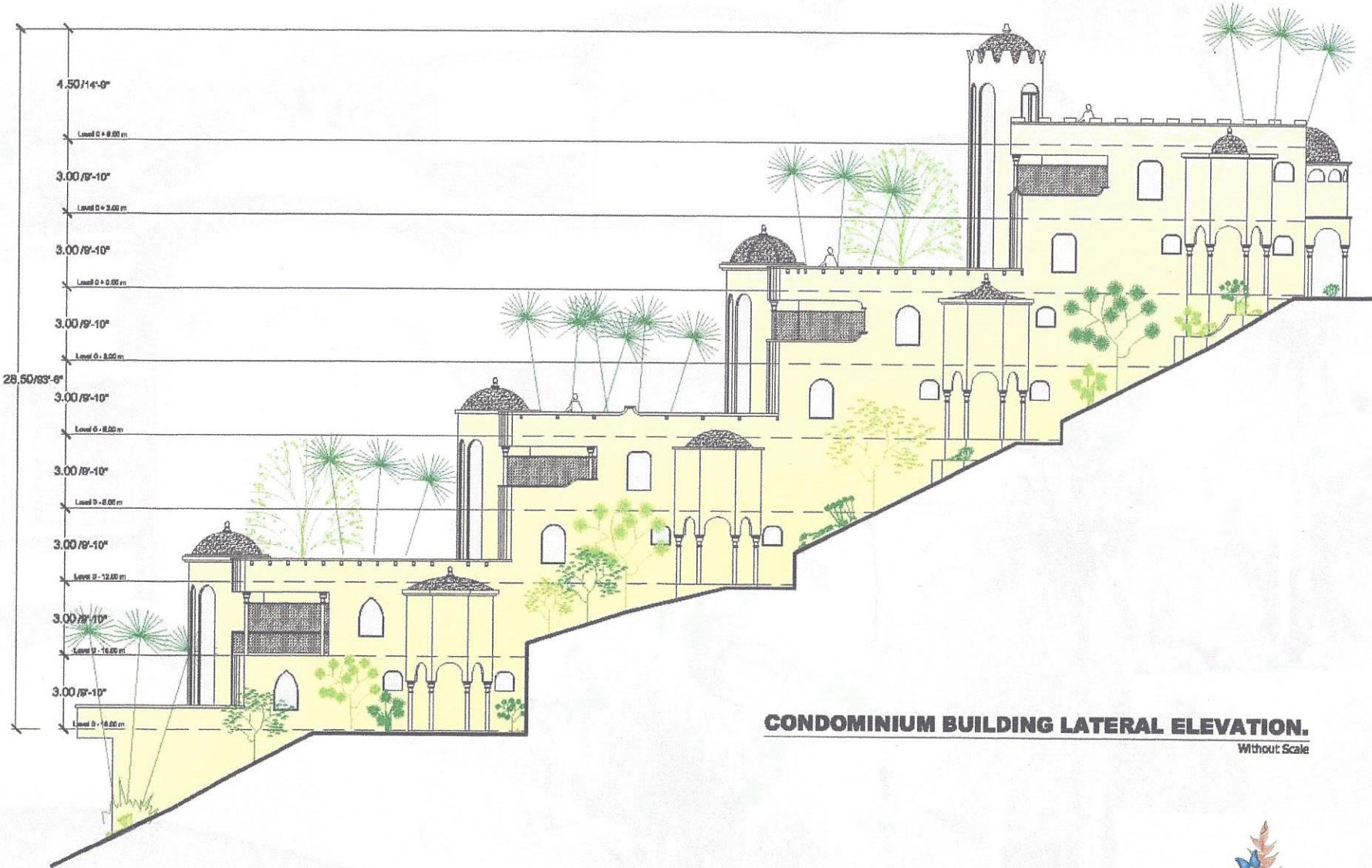


**Condominium Building  
Finishes Option.**



**CONDOMINIUM BUILDING  
SCHEMATIC LONGITUDINAL SECTION.**  
Without Scale  
**INDIVIDUAL CONDOMINIUMS LOCATION**  
*Note: Each Building has 4 Individual Condominiums (A,B,C, and D).*





**CONDOMINIUM BUILDING LATERAL ELEVATION.**  
Without Scale





**CONDOMINIUM BUILDING FRONTAL ELEVATION.**  
Without Scale

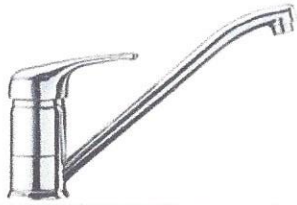


**CONDOMINIUM "A" BACK ELEVATION.**  
Without Scale

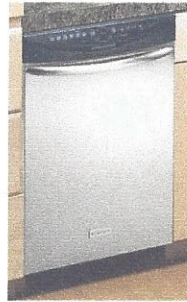


View of Access Condominiums Area.

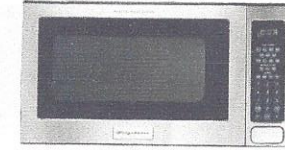




**Sink set of faucets**  
One Control  
Model F56001C



**Dishwasher**  
PLD2855RFC - 24" Professional  
Soil Sensing Dishwasher

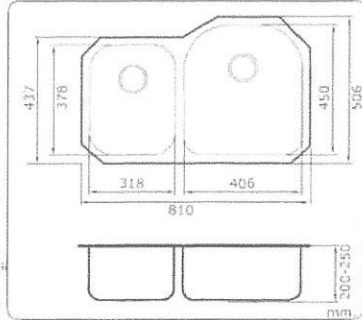


**Microwave**  
PLMB209DC - 2.0 Cu. Ft. Built-In Microwave Oven

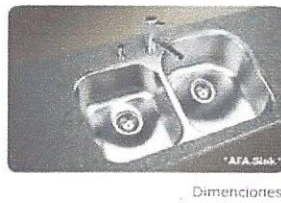


**Range**  
PLEFMZ99EC - 30" Electric Range

**Sink**  
Undermount Double Bowls Sink



**Habitat**  
AF-B10x506  
Acero Inoxidable  
Undermount Double Bowls

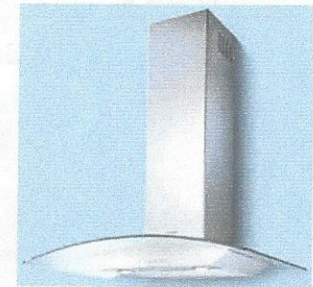


Dimensiones



**Glass Kitchen Extractor**

Venezia



**Granite Counter Top**

(to be define Granite Color)



**Aerial Cabinet** "Teca" / "Melina" Wood

**Refrigerator**

PLHS69EGS - 26 Cu. Ft. Side by Side Refrigerator



**Kitchen Appliances and Finishes**

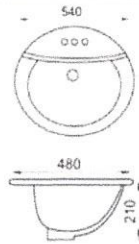
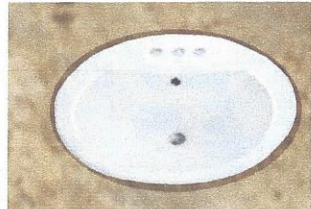


**Closets**  
Wood Doors with Wood Lattice  
Internal Structure of Stainless Steel



**Sink set of faucets**

One Control Model F15002C



**Sink**

Undermount Sink / Model N-2201

Granite Counter Top (to be define Granite Color ), Mirror and Wood Cabinet.



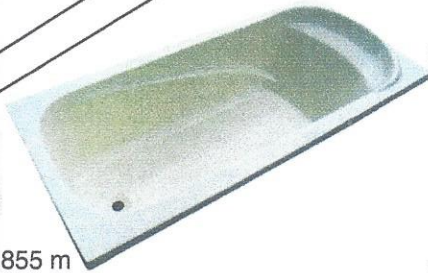
**Toilet**

Model NO 3090

**Tub**

Model Napoli / White Color

Measures: 1.70 m x 0.80 m x 0.855 m



**Interior Doors**

Wood of "Teca" or "Melina"



**Laundry Sink**

Double Bowls Fiberglass Sink

**Washer**

ATF7000EG - Affinity™ Washer

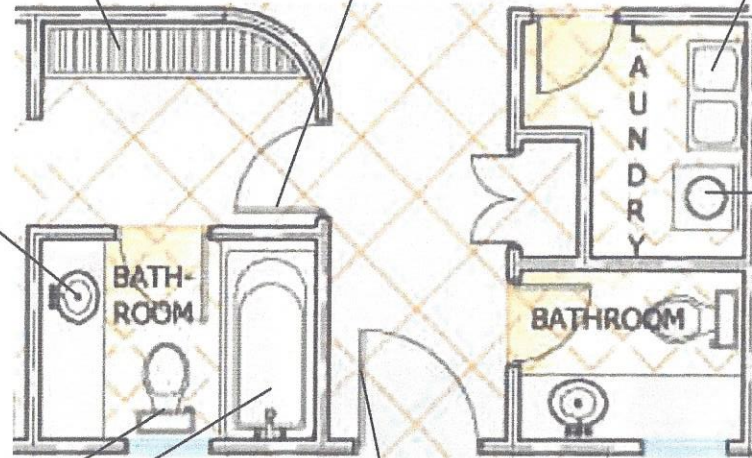
Frigidaire



**Dryer**

AEQ7000EG - Affinity™ 5.8 Cu. Ft. Super Capacity Dryer

Frigidaire



Access to  
Condominium

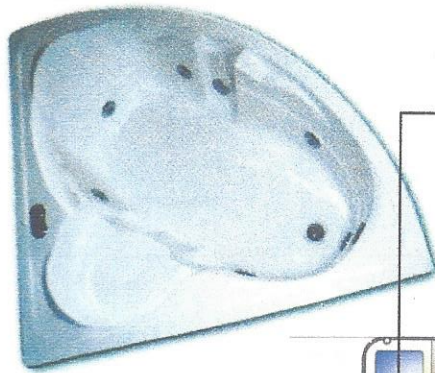
**Principal Door**

Wood of "Teca" or "Melina"



**Bathrooms and Laundry Finishes / Condominium Level +/- 0.00 m**

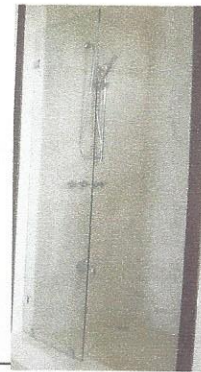




**Terrace Jacuzzi / Tub**

Model Venecia / White Color

Measures: 1.45 m x 1.45 m x 0.465 m



**Shower**

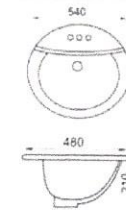
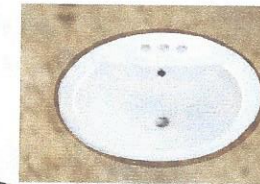
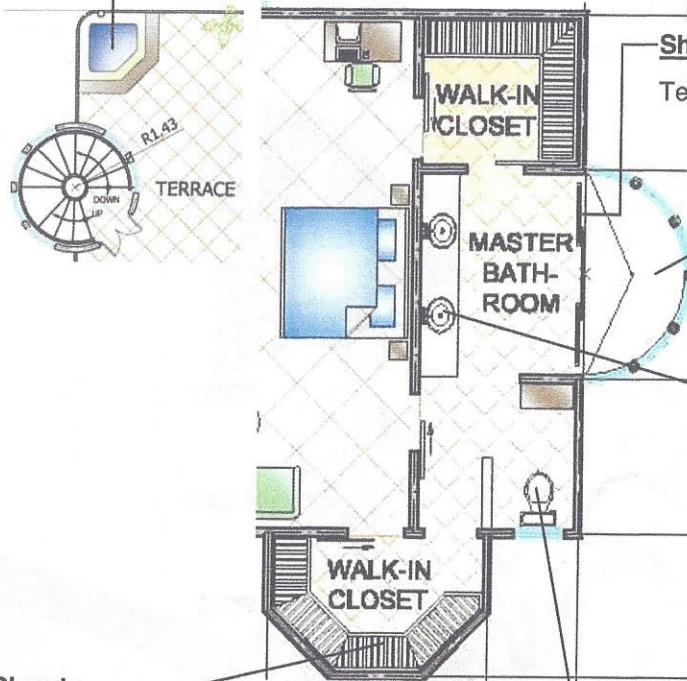
Tempered Glass Doors



Exposed shower set of faucets  
Model 37A9T7+2a / Ilfada Line.



**Closets**  
Stainless Steel Structure

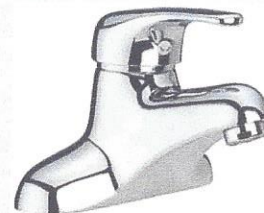


**Sink**

Undermount Sink / Model N-2201  
Granite Counter Top (to be define Granite Color ), Mirror and Wood Cabinet.

**Toilet**

Model NO 3090

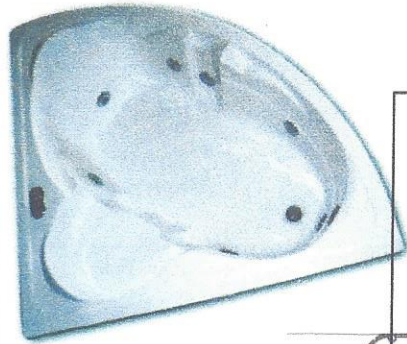


**Sink set of faucets**

One Control Model F15002C

**Master Bathroom Finishes / Condominium Level 0 + 3.00 m / Option "A"**





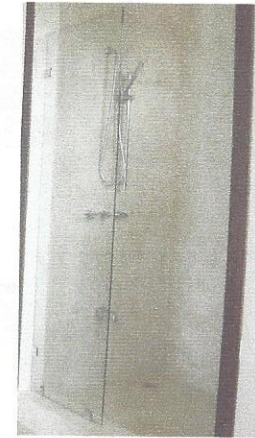
**Terrace Jacuzzi / Tub**

Model Venecia / White Color  
Measures: 1.45 m x 1.45 m x 0.465 m

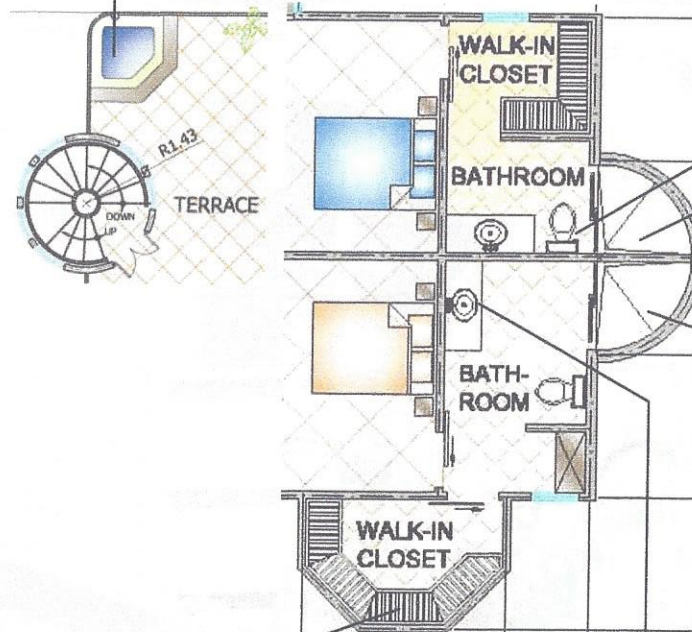


**Toilet**

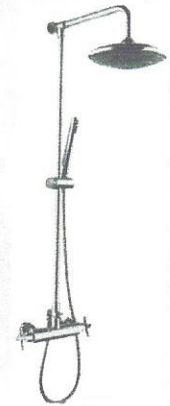
Model NO 3090



**Shower** Tempered Glass Doors.

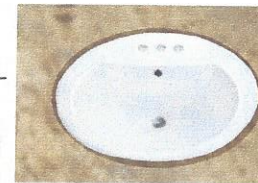


Exposed shower set of faucets  
Model 37A9T7+2a / Iliada Line.



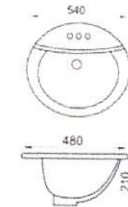
**Closets**

Stainless Steel Structure



**Sink**

Undermount Sink / Model N-2201



**Sink set of faucets**

One Control Model F15002C

Granite Counter Top (to be define Granite Color ), Mirror and Wood Cabinet.

**Bathrooms Finishes / Condominium Level 0 + 3.00 m / Option "B"**